



## Department of Animal and Dairy Science

College of Agricultural & Environmental Sciences

UNIVERSITY OF GEORGIA

Jason Duggin

1282 Hwy 53 Spur, SW – Suite #200

Calhoun, Georgia 30701

TEL 706-624-1403

jduggin@uga.edu

ugabeef.com

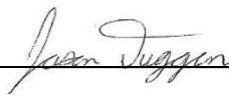
---

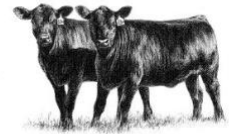
## 26<sup>th</sup> Calhoun HERD Program – Report 4

---

April 7, 2026

To: Calhoun HERD Program Consignors & Other Interested Parties

From:  Jason Duggin, Extension Beef Specialist



The heifers look great overall and have been gaining well. Blood test result were 55.3% bred to AI. Pleased with how they have developed thus far.

**\*We need to be notified by Friday, April 17 if you are planning to change the sale designation of your heifers. We need to know proper sale designation for them to be entered or removed from the sale catalog.**

**Upcoming Sale:** We anticipate that approximately 65 heifers will be sold this year. LiveAuction.tv will once again be available for online bidding. The heifers will be in the NW GA Livestock Pavilion as they have been in the past. They will be sold using the videos.

***Thank you for supporting the Calhoun HERD Program! Come and visit when you can!***

### **Calhoun HERD Future Dates of Interest:**

- May 20 - Pregnancy Ultrasound
- May 26 @ 2:00 – heifers available for viewing at NW GA Livestock Pavilion
- May 26 @ 6:30 - Reproduction Focus Workshop at NW GA Livestock Pavilion
- May 27 (Wednesday) - Calhoun HERD Sale @ 12:30 pm

### **UGA Beef Program Upcoming Events:**

- Tifton HERD Sale: Tuesday, April 21st @ 12:30 pm

Enclosure



## 2025-26 Calhoun H.E.R.D. Program Consignor List

<b>Farm Name</b>	<b>Contact</b>	<b>City</b>	<b>State</b>	<b>Phone</b>
2 Brothers Farm	Josh Moore	Dawsonville	GA	770-670-8595
Chattahooche Land & Cattle	Brandon Wilson	Lafayette	GA	423-413-4184
Dean Angus Farm	Tim Dean	Chickamauga	GA	706-639-3077
Greuel Family Brangus	Roger Greuel	Brooks	GA	770-378-6253
Rocky Hill Farm	Kevin Walraven	Calhoun	GA	706-766-3164
MT Farms	Grady Zittrouer	Springfield	GA	912-713-3470
Oostanuala Farm	Milton Stewart	Calhoun	GA	706-346-5599
Pettit Family Farm	John Clark Pettit	Ellijay	GA	706-273-8457
Powder Creek	Rodney Hilley	Molena	GA	678-372-9111
RedWol Acres	Michael Lowder	Winterville	GA	706-714-1678
Shady Grove Farm	Dean Bagwell & Bentley Bagwell	Cartersville	GA	770-546-4436
Smalley Cattle Co.	Bob Smalley	Lafayette	GA	423-595-5951
Wes Smith	Wes Smith	Thomaston	GA	706-601-9527
Williams Angus Farm	Gene Williams & Michael Williams	Calhoun	GA	706-252-0857

**2025-26 Calhoun H.E.R.D. Program  
Report 4**

CONSIGNOR	TEST TAG	TATTOO/ BRAND	BIRTH DATE	4/1 DISP	AVG DISP	4/1 HH	4/1 WT	63		118		4/1 WDA	BREED of SIRE	PASTURE	SELL/ HOME	REG # or COM
								DAY GAIN	DAY ADG	DAY GAIN	DAY ADG			EXPOSURE		
								INFORMATION								
2 Brothers Cattle	1	434	12/25/24	1.0	1.0	48.5	882	80	1.27	156	1.32	1.91	AN	AI'd on 3/2/26 to Basin True Grit 1021	TBD	REG
2 Brothers Cattle	2	433	12/24/24	1.0	1.0	48.0	884	98	1.56	164	1.39	1.91	AN	AI'd on 3/2/26 to Raven Republic 1564	TBD	REG
2 Brothers Cattle	3	435	12/25/24	2.0	1.5	45.0	802	42	0.67	112	0.95	1.74	AN	AI'd on 3/2/26 to Raven Republic 1564	TBD	REG
2 Brothers Cattle	4	510	02/10/25	1.0	1.0	48.0	854	50	0.79	124	1.05	2.06	AN	AI'd on 3/2/26 to Basin True Grit 1021	TBD	REG
2 Brothers Cattle	5	504	01/17/25	1.0	1.0	46.0	730	122	1.94	208	1.76	1.66	AN	PE'd to WAF Craftsman 385 from 3/9/26 - 4/23/26	TBD	REG
2 Brothers Cattle	6	509	02/01/25	1.0	1.0	47.0	742	138	2.19	196	1.66	1.75	AN	AI'd on 3/2/26 to Basin True Grit 1021	TBD	REG
2 Brothers Cattle	7	502	01/16/25	1.0	1.0	47.0	768	32	0.51	70	0.59	1.75	AN	PE'd to Meldons Commerce 314, UG Dual Threat 4549, & HAF Growth Fund 0067 673 from 3/9/26 - 4/23/26	TBD	REG
2 Brothers Cattle	8	441	12/30/24	3.0	2.0	45.0	756	108	1.71	180	1.53	1.65	AN	PE'd to WAF Craftsman 385 from 3/9/26 - 4/23/26	TBD	REG
2 Brothers Cattle	9	443	12/31/24	1.0	1.0	49.0	1025	53	0.84	187	1.58	2.25	AN	PE'd to Meldons Commerce 314, UG Dual Threat 4549, & HAF Growth Fund 0067 673 from 3/9/26 - 4/23/26	TBD	REG
2 Brothers Cattle	10	506	01/21/25	1.0	1.0	46.5	748	64	1.02	124	1.05	1.72	AN	PE'd to Meldons Commerce 314, UG Dual Threat 4549, & HAF Growth Fund 0067 673 from 3/9/26 - 4/23/26	TBD	REG
2 Brothers Cattle	11	440	12/29/24	1.0	1.0	51.0	766	68	1.08	150	1.27	1.67	AN	PE'd to WAF Craftsman 385 from 3/9/26 - 4/23/26	TBD	REG
2 Brothers Cattle	12	436	12/25/24	1.0	1.0	46.0	804	100	1.59	204	1.73	1.74	AN	AI'd on 3/2/26 to Basin True Grit 1021	TBD	REG
2 Brothers Cattle	13	503	01/16/25	1.0	1.0	48.0	924	88	1.40	228	1.93	2.10	AN	AI'd on 3/2/26 to Basin True Grit 1021	TBD	REG
2 Brothers Cattle	14	444	12/31/24	1.0	1.0	48.0	942	52	0.83	170	1.44	2.07	AN	AI'd on 3/2/26 to Mead Magnitude	TBD	REG
2 Brothers Cattle	15	445	12/31/24	1.0	1.0	48.0	896	84	1.33	156	1.32	1.96	AN	AI'd on 3/2/26 to Basin True Grit 1021	TBD	REG
2 Brothers Cattle	16	439	12/29/24	1.0	1.0	44.0	728	82	1.30	98	0.83	1.59	AN	AI'd on 3/2/26 to Raven Republic 1564	TBD	REG
2 Brothers Cattle	17	432	12/01/24	1.0	1.0	48.0	970	50	0.79	186	1.58	2.00	AN	AI'd on 3/2/26 to Basin True Grit 1021	TBD	REG
2 Brothers Cattle	18	438	12/27/24	1.0	1.0	45.0	714	-30	-0.48	68	0.58	1.55	AN	PE'd to Meldons Commerce 314, UG Dual Threat 4549, & HAF Growth Fund 0067 673 from 3/9/26 - 4/23/26	TBD	REG
2 Brothers Cattle	19	437	12/26/24	1.0	1.0	45.0	782	30	0.48	114	0.97	1.70	AN	PE'd to Meldons Commerce 314, UG Dual Threat 4549, & HAF Growth Fund 0067 673 from 3/9/26 - 4/23/26	TBD	REG
Oostanaula River Farm	20	181M	12/11/24	2.0	1.5	51.0	1075	-10	-0.16	45	0.38	2.26	AN	AI'd on 3/2/26 to Mead Magnitude	Sell	COMM
Oostanaula River Farm	21	172M	12/18/24	2.0	2.8	51.0	1100	60	0.95	90	0.76	2.35	AN	PE'd to Meldons Commerce 314, UG Dual Threat 4549, & HAF Growth Fund 0067 673 from 3/9/26 - 4/23/26	Sell	COMM
Oostanaula River Farm	23	68M	12/10/24	1.0	1.0	50.0	988	34	0.54	50	0.42	2.07	AN	AI'd on 3/2/26 to Mead Magnitude	Sell	COMM
Oostanaula River Farm	24	170M	12/26/24	2.0	2.0	50.0	1090	20	0.32	100	0.85	2.36	AN	AI'd on 3/2/26 to Mead Magnitude	Sell	COMM
Oostanaula River Farm	25	171M	12/06/24	3.0	2.8	50.5	1080	-10	-0.16	60	0.51	2.25	AN	AI'd on 3/2/26 to Mead Magnitude	Sell	COMM

## 2025-26 Calhoun H.E.R.D. Program Report 4

CONSIGNOR	TEST	TATTOO/	BIRTH	4/1	AVG	4/1	4/1	63	63	118	118	4/1	BREED	PASTURE	SELL/ HOME	or COM	
	TAG	BRAND	DATE	DISP	DISP	HH	WT	DAY	DAY	DAY	DAY		WDA	of SIRE			EXPOSURE
	INFORMATION																
Oostanaula River Farm	26	478M	12/06/24	1.0	1.5	49.0	996	18	0.29	62	0.53	2.07	AN	AI'd on 3/2/26 to Mead Magnitude	Sell	COMM	
Oostanaula River Farm	27	176M	12/14/24	2.0	2.5	51.0	1185	35	0.56	85	0.72	2.51	AN	AI'd on 3/2/26 to Mead Magnitude	Sell	COMM	
Oostanaula River Farm	28	169M	12/09/24	1.0	2.0	51.0	1050	76	1.21	100	0.85	2.20	AN	AI'd on 3/2/26 to Mead Magnitude	Sell	COMM	
Oostanaula River Farm	29	05M	12/05/24	3.0	3.0	51.0	1120	50	0.79	80	0.68	2.32	AN	AI'd on 3/2/26 to Mead Magnitude	Sell	COMM	
Shady Grove Farm	30	5039	01/11/25	2.0	1.5	48.0	854	116	1.84	182	2.89	1.92	HE	PE'd to Meldons Commerce 314, UG Dual Threat 4549, & HAF Growth Fund 0067 673 from 3/9/26 - 4/23/26	Sell	COMM	
Shady Grove Farm	31	5028	12/27/24	1.0	1.0	48.0	770	106	1.68	166	2.63	1.67	SMX	AI'd on 3/2/26 to Mead Magnitude	Sell	COMM	
Shady Grove Farm	32	5011	12/16/24	1.0	1.0	47.0	832	112	1.78	202	3.21	1.77	SMX	PE'd to Meldons Commerce 314, UG Dual Threat 4549, & HAF Growth Fund 0067 673 from 3/9/26 - 4/23/26	Sell	COMM	
Shady Grove Farm	33	5030	12/31/24	2.0	1.5	49.0	866	104	1.65	222	1.88	1.90	HE	AI'd on 3/2/26 to Mead Magnitude	Sell	COMM	
Shady Grove Farm	34	5050	12/11/24	2.0	2.0	50.0	826	40	0.63	104	0.88	1.74	HE	PE'd to Meldons Commerce 314, UG Dual Threat 4549, & HAF Growth Fund 0067 673 from 3/9/26 - 4/23/26	Sell	COMM	
Shady Grove Farm	35	5051	01/31/25	2.0	2.0	49.5	854	104	1.65	178	1.51	2.01	SMX	PE'd to Meldons Commerce 314, UG Dual Threat 4549, & HAF Growth Fund 0067 673 from 3/9/26 - 4/23/26	Sell	COMM	
Shady Grove Farm	36	5007	12/12/24	3.0	3.0	49.0	812	98	1.56	146	1.24	1.71	AN	PE'd to Meldons Commerce 314, UG Dual Threat 4549, & HAF Growth Fund 0067 673 from 3/9/26 - 4/23/26	Sell	COMM	
Shady Grove Farm	37	5044	12/05/24	2.0	2.3	50.0	844	62	0.98	146	1.24	1.75	RAX	PE'd to Meldons Commerce 314, UG Dual Threat 4549, & HAF Growth Fund 0067 673 from 3/9/26 - 4/23/26	Sell	COMM	
Shady Grove Farm	38	5019	12/20/24	1.0	1.0	47.0	738	30	0.48	106	0.90	1.58	SMX	PE'd to Meldons Commerce 314, UG Dual Threat 4549, & HAF Growth Fund 0067 673 from 3/9/26 - 4/23/26	Sell	COMM	
Shady Grove Farm	39	5194	12/02/24	3.0	2.0	51.0	954	138	2.19	218	1.85	1.97	AN	PE'd to Meldons Commerce 314, UG Dual Threat 4549, & HAF Growth Fund 0067 673 from 3/9/26 - 4/23/26	Sell	COMM	
Shady Grove Farm	40	5048	12/09/24	1.0	1.0	48.0	796	100	1.59	168	1.42	1.67	AN	PE'd to Meldons Commerce 314, UG Dual Threat 4549, & HAF Growth Fund 0067 673 from 3/9/26 - 4/23/26	Sell	COMM	
Shady Grove Farm	41	5005	12/12/24	2.0	2.3	47.5	740	56	0.89	104	0.88	1.56	SMX	AI'd on 3/2/26 to Mead Magnitude	Sell	COMM	
Shady Grove Farm	42	5190	12/02/24	3.0	3.0	48.0	744	72	1.14	144	1.22	1.53	RAX	PE'd to WAF Craftsman 385 from 3/9/26 - 4/23/26	Sell	COMM	
Shady Grove Farm	43	5189	12/02/24	2.0	2.5	49.5	878	126	2.00	214	1.81	1.81	SMX	AI'd on 3/2/26 to Mead Magnitude	Sell	COMM	
NW GA REC	44		01/17/25	2.0	1.5	50.0	920	70	1.11	126	1.07	2.10	AN	PE'd to Meldons Commerce 314, UG Dual Threat 4549, & HAF Growth Fund 0067 673 from 3/9/26 - 4/23/26	TBD	COMM	
NW GA REC	45		01/23/25	1.0	1.0	48.5	874	64	1.02	146	1.24	2.02	AN	AI'd on 3/2/26 to Mead Magnitude	TBD	COMM	
NW GA REC	46		01/23/25	1.0	1.0	50.0	922	98	1.56	194	1.64	2.13	AN	AI'd on 3/2/26 to Mead Magnitude	TBD	COMM	
NW GA REC	47		01/22/25	2.0	1.5	49.0	880	78	1.24	120	1.02	2.03	AN	PE'd to Meldons Commerce 314, UG Dual Threat 4549, & HAF Growth Fund 0067 673 from 3/9/26 - 4/23/26	TBD	COMM	
NW GA REC	48		01/23/25	1.0	1.0	51.0	864	72	1.14	138	1.17	2.00	AN	PE'd to Meldons Commerce 314, UG Dual Threat 4549, & HAF Growth Fund 0067 673 from 3/9/26 - 4/23/26	TBD	COMM	
Smalley Cattle Co	49	5036	12/23/24	1.0	1.0	50.0	892	132	2.10	160	1.36	1.92	AN	AI'd on 3/2/26 to Mead Magnitude	Home	COMM	

## 2025-26 Calhoun H.E.R.D. Program Report 4

CONSIGNOR	TEST TAG	TATTOO/ BRAND	BIRTH DATE	4/1 DISP	AVG DISP	4/1 HH	4/1 WT	63		118		4/1 WDA	BREED of SIRE	PASTURE	SELL/ HOME	REG # or COM
								DAY GAIN	DAY ADG	DAY GAIN	DAY ADG			EXPOSURE		
								INFORMATION								
Smalley Cattle Co	50	5227	01/01/25	1.0	1.0	49.0	938	46	0.73	156	1.32	2.06	AN	PE'd to Meldons Commerce 314, UG Dual Threat 4549, & HAF Growth Fund 0067 673 from 3/9/26 - 4/23/26	Home	COMM
Redwol Acres	51	204	12/15/24	1.0	1.0	50.0	1010	48	0.76	140	1.19	2.14	AN	AI'd on 3/2/26 to Mead Magnitude	Home	COMM
Redwol Acres	52	104	12/31/24	1.0	1.0	51.5	1000	128	2.03	114	0.97	2.19	AN	AI'd on 3/2/26 to Mead Magnitude	TBD	COMM
Redwol Acres	53	105	02/15/25	1.0	1.0	49.0	772	50	0.79	90	0.76	1.88	AN	PE'd to Meldons Commerce 314, UG Dual Threat 4549, & HAF Growth Fund 0067 673 from 3/9/26 - 4/23/26	Sell	COMM
Powder Creek	54	M975	12/20/24	1.0	1.0	50.0	958	58	0.92	124	1.05	2.05	AN	PE'd to Meldons Commerce 314, UG Dual Threat 4549, & HAF Growth Fund 0067 673 from 3/9/26 - 4/23/26	Sell	COMM
Powder Creek	55	M05	12/02/24	1.0	1.0	49.0	840	44	0.70	90	0.76	1.73	AN	AI'd on 3/2/26 to Mead Magnitude	Sell	COMM
Powder Creek	56	M07	12/02/24	1.0	1.0	48.5	1010	24	0.38	98	0.83	2.08	AN	AI'd on 3/2/26 to Mead Magnitude	Sell	COMM
Powder Creek	57	M608	12/04/24	1.0	1.0	50.5	966	48	0.76	42	0.36	2.00	AN	AI'd on 3/2/26 to Mead Magnitude	Sell	COMM
Dean Angus Farm	59	506	01/23/25	1.0	1.0	46.0	746	82	1.30	130	1.10	1.72	AN	AI'd on 3/2/26 to Basin True Grit 1021	TBD	Reg
Dean Angus Farm	60	502	01/15/25	1.0	1.0	47.0	786	108	1.71	168	1.42	1.78	AN	AI'd on 3/2/26 to Basin True Grit 1021	TBD	Reg
Dean Angus Farm	61	507	01/25/25	1.0	1.0	47.0	776	116	1.84	178	1.51	1.80	AN	PE'd to WAF Craftsman 385 from 3/9/26 - 4/23/26	TBD	Reg
Dean Angus Farm	62	504	01/19/25	1.0	1.0	47.5	810	40	0.63	108	0.92	1.85	AN	PE'd to Meldons Commerce 314, UG Dual Threat 4549, & HAF Growth Fund 0067 673 from 3/9/26 - 4/23/26	TBD	Reg
Dean Angus Farm	63	510	02/26/25	1.0	1.0	47.0	774	44	0.70	76	0.64	1.94	AN	AI'd on 3/2/26 to Basin True Grit 1021	TBD	Reg
Dean Angus Farm	64	513	01/30/25	1.0	1.0	48.0	826	50	0.79	128	1.08	1.94	AN	PE'd to Meldons Commerce 314, UG Dual Threat 4549, & HAF Growth Fund 0067 673 from 3/9/26 - 4/23/26	TBD	Reg
Dean Angus Farm	65	508	01/25/25	1.0	1.0	48.0	746	24	0.38	98	0.83	1.73	AN	PE'd to Meldons Commerce 314, UG Dual Threat 4549, & HAF Growth Fund 0067 673 from 3/9/26 - 4/23/26	TBD	Reg
Dean Angus Farm	66	525	02/28/25	1.0	1.0	48.0	796	110	1.75	184	1.56	2.01	AN	PE'd to WAF Craftsman 385 from 3/9/26 - 4/23/26	TBD	Reg
Greuel Family Brangus	67	GFB77N	02/28/25	1.0	1.0	51.0	966	60	0.95	128	1.08	2.43	UB	PE'd to Meldons Commerce 314, UG Dual Threat 4549, & HAF Growth Fund 0067 673 from 3/9/26 - 4/23/26	Sell	Reg
Greuel Family Brangus	68	GFB541N	02/27/25	3.0	3.3	48.0	880	60	0.95	74	0.63	2.21	UB	PE'd to Meldons Commerce 314, UG Dual Threat 4549, & HAF Growth Fund 0067 673 from 3/9/26 - 4/23/26	Sell	Reg
Greuel Family Brangus	69	GFB48N	02/14/25	2.0	2.8	50.5	1025	-10	-0.16	45	0.71	2.49	UB	AI'd on 3/2/26 to Mead Magnitude	Sell	Reg
Wes Smith	70	675	12/18/24	7.0	4.5	49.0	794	58	0.92	124	1.97	1.69	AN	AI'd on 3/2/26 to Mead Magnitude	Sell	Reg
Wes Smith	71	795	12/07/24	2.0	1.5	47.0	758	100	1.59	178	2.83	1.58	AN	PE'd to WAF Craftsman 385 from 3/9/26 - 4/23/26	Sell	Reg
Williams Angus Farm	72	685	12/02/24	1.0	1.0	50.5	1015	67	1.06	91	1.44	2.09	AN	AI'd on 3/2/26 to Mead Magnitude	Sell	COMM
Williams Angus Farm	73	515	12/13/24	1.0	1.0	50.0	920	50	0.79	72	1.14	1.94	AN	PE'd to Meldons Commerce 314, UG Dual Threat 4549, & HAF Growth Fund 0067 673 from 3/9/26 - 4/23/26	Sell	Reg
Williams Angus Farm	74	825	01/06/25	1.0	1.0	48.0	840	42	0.67	68	1.08	1.87	AN	AI'd on 3/2/26 to Mead Magnitude	Sell	Reg

## 2025-26 Calhoun H.E.R.D. Program Report 4

CONSIGNOR	TEST	TATTOO/	BIRTH	4/1	AVG	4/1	4/1	63	63	118	118	4/1	BREED	PASTURE	SELL/	REG #
	TAG	BRAND	DATE	DISP	DISP	HH	WT	DAY	DAY	DAY	DAY	WDA	of SIRE	EXPOSURE	HOME	or
	INFORMATION													COM		
Williams Angus Farm	75	675	12/01/24	2.0	1.5	51.0	1115	55	0.87	141	2.24	2.29	AN	AI'd on 3/2/26 to Mead Magnitude	Sell	COMM
Williams Angus Farm	76	805	12/13/24	1.0	1.0	47.0	812	88	1.40	130	2.06	1.71	AN	AI'd on 3/2/26 to Mead Magnitude	Sell	Reg
Williams Angus Farm	77	975	12/07/24	1.0	1.0	48.0	842	38	0.60	124	1.97	1.75	AN	AI'd on 3/2/26 to Mead Magnitude	Sell	Reg
Williams Angus Farm	78	655	12/11/24	1.0	1.0	49.0	860	80	1.27	112	1.78	1.81	AN	AI'd on 3/2/26 to Mead Magnitude	Sell	Reg
Williams Angus Farm	79	705	12/01/24	1.0	1.0	50.0	968	6	0.10	62	0.98	1.99	AN	AI'd on 3/2/26 to Mead Magnitude	Sell	COMM
MT Farms	80	N05	02/15/25	1.0	1.0	48.0	732	26	0.41	24	0.38	1.79	BH	PE'd to WAF Craftsman 385 from 3/9/26 - 4/23/26	TBD	Reg
MT Farms	81	N09	02/28/25	1.0	1.0	46.0	778	28	0.44	56	0.89	1.96	BH	PE'd to WAF Craftsman 385 from 3/9/26 - 4/23/26	TBD	Reg
MT Farms	82	N08	02/19/25	2.0	1.5	47.0	782	62	0.98	88	1.40	1.93	BH	AI'd on 3/2/26 to Jo Endure 3336	TBD	Reg
MT Farms	83	N07	02/19/25	1.0	1.0	45.0	640	68	1.08	76	1.21	1.58	BH	AI'd on 3/2/26 to Jo Endure 3336	TBD	Reg
MT Farms	84	N03	02/05/25	1.0	1.0	46.0	686	38	0.60	54	0.86	1.63	BH	AI'd on 3/2/26 to Jo Endure 3336	TBD	Reg
MT Farms	85	N01	02/01/25	1.0	1.0	47.0	664	70	1.11	72	1.14	1.57	BH	PE'd to WAF Craftsman 385 from 3/9/26 - 4/23/26	TBD	Reg
MT Farms	86	N11	02/28/25	1.0	1.0	46.0	734	48	0.76	64	1.02	1.85	BH	AI'd on 3/2/26 to Jo Endure 3336	TBD	Reg
MT Farms	87	N04	02/12/25	2.0	1.5	47.0	722	58	0.92	64	1.02	1.75	BH	AI'd on 3/2/26 to Jo Endure 3336	TBD	Reg
Pettit Family Farm LLC	88	P253	02/23/25	1.0	1.0	48.0	748	46	0.73	114	1.81	1.86	AN	AI'd on 3/2/26 to Mead Magnitude	Home	COMM
Pettit Family Farm LLC	89	B252	02/28/25	2.0	2.0	47.0	768	144	2.29	232	3.68	1.93	AN	AI'd on 3/2/26 to Mead Magnitude	Home	COMM
Pettit Family Farm LLC	90	B251	02/21/25	2.0	1.5	48.0	774	110	1.75	220	3.49	1.92	AN	AI'd on 3/2/26 to Mead Magnitude	Home	COMM
Pettit Family Farm LLC	91	P252	01/01/25	1.0	1.0	49.5	936	100	1.59	222	3.52	2.06	AN	PE'd to Meldons Commerce 314, UG Dual Threat 4549, & HAF Growth Fund 0067 673 from 3/9/26 - 4/23/26	Home	COMM
Kevin Walraven	92	502	11/21/24	1.0	1.0	49.0	758	54	0.86	106	1.68	1.53	AN	PE'd to Meldons Commerce 314, UG Dual Threat 4549, & HAF Growth Fund 0067 673 from 3/9/26 - 4/23/26	Home	COMM
Kevin Walraven	93	501	11/09/24	3.0	3.0	47.0	786	70	1.11	150	2.38	1.55	AN	PE'd to Meldons Commerce 314, UG Dual Threat 4549, & HAF Growth Fund 0067 673 from 3/9/26 - 4/23/26	Home	COMM
Kevin Walraven	94	523	11/22/24	1.0	1.5	49.0	878	128	2.03	180	2.86	1.77	HE	PE'd to Meldons Commerce 314, UG Dual Threat 4549, & HAF Growth Fund 0067 673 from 3/9/26 - 4/23/26	Home	COMM
Chattahoochie Land & Cattle	95	41	12/22/24	1.0	1.0	47.0	722	24	0.38	78	1.24	1.55		PE'd to Meldons Commerce 314, UG Dual Threat 4549, & HAF Growth Fund 0067 673 from 3/9/26 - 4/23/26		
Chattahoochie Land & Cattle	96	40	11/30/24	1.0	1.0	50.0	990	80	1.27	160	2.54	2.03		AI'd on 3/2/26 to Mead Magnitude		
<b>Average of 94 Heifers</b>			<b>01/03/25</b>	<b>1.5</b>	<b>1.4</b>	<b>48.4</b>	<b>861</b>	<b>66</b>	<b>1.05</b>	<b>127</b>	<b>1.37</b>	<b>1.90</b>				
<b>HH = Hip Height</b>																